

REGIONAL & GLOBAL INDICES - as of 06-12-2024

Asian	Last	%Daily	%Weekly	%YTD	24Hi	24Lo
IHSG	7,382.79	0.95%	3.77%	1.51%	7,905.39	6,726.92
HSI	19,865.85	1.56%	2.28%	16.53%	23,099.78	14,961.18
KLCI	1,613.25	-0.15%	1.19%	10.90%	1,678.80	1,453.10
Nikkei	39,091.17	-0.77%	2.31%	16.81%	42,224.02	31,458.42
SSEC	3,404.08	1.05%	2.33%	14.43%	3,489.78	2,702.19
STI	3,796.16	-0.69%	1.52%	17.16%	3,822.68	3,107.10
Europe	Last	%Daily	%Weekly	%YTD	24Hi	24Lo
CAC40	7,426.88	1.31%	2.65%	-1.54%	8,239.99	5,931.06
DAX	20,384.61	0.13%	3.86%	21.69%	20,384.61	16,431.69
FTSE	8,308.61	-0.49%	0.26%	7.44%	8,445.80	7,446.29
U.S	Last	%Daily	%Weekly	%YTD	24Hi	24Lo
DJIA	44,642.52	-0.28%	-0.60%	18.45%	45,014.04	37,266.67
Nasdaq	19,859.77	0.81%	3.34%	32.30%	20,115.54	14,500.11
S&P500	6,090.27	0.25%	0.96%	28.35%	6,090.27	4,688.70

Source : Bloomberg, CNBC

Global Macroeconomic Updates - as of 06-12-2024

	GDP YoY	GDP QoQ	Interest	Inflation	Jobless	Debt/GDP
China	4.60%	0.90%	3.10%	0.30%	5.00%	83.40%
Japan	0.30%	0.20%	0.25%	2.30%	2.50%	255.20%
Hong Kong	1.80%	-1.10%	5.00%	1.40%	3.10%	38.40%
Malaysia	5.30%	1.80%	3.00%	1.90%	3.20%	61.10%
Singapore	5.40%	3.20%	2.77%	1.40%	1.80%	167.80%
Thailand	3.00%	1.20%	2.25%	0.95%	1.02%	61.90%
Indonesia	4.95%	1.50%	6.00%	1.55%	4.91%	39.30%
United Kingdom	1.00%	0.10%	4.75%	2.30%	4.30%	97.60%
Germany	-0.30%	0.10%	3.40%	2.20%	6.10%	62.90%
France	1.20%	0.40%	3.40%	1.30%	7.40%	110.60%
Euro Area	0.90%	0.40%	3.40%	2.30%	6.30%	87.40%
United States	2.80%	2.80%	4.75%	2.60%	4.20%	122.30%

Source : tradingeconomics.com

Global Macroeconomic Released

	Date	Forecast	Previous
China Inflation Rate YoY (Nov)	09-Dec-24	0.50%	0.30%
Indonesia Consumer Confidence (Nov)	09-Dec-24	121.00	121.10
Indonesia Retail Sales YoY (Oct)	10-Dec-24	4.50%	4.80%
Germany Inflation Rate YoY Final (Nov)	10-Dec-24	2.20%	2.00%
U.S Core Inflation Rate YoY (Nov)	11-Dec-24	3.30%	3.30%
U.S Inflation Rate YoY (Nov)	11-Dec-24	2.70%	2.60%
United Kingdom GDP YoY (Oct)	12-Dec-24	1.60%	1.00%
Euro Area ECB Interest Rate Decision	12-Dec-24	3.15%	3.40%
United Kingdom Gfk Consumer Confidence (Dec)	13-Dec-24	-15.00	-18.00
Euro Area Industrial Production YoY (Oct)	13-Dec-24	-3.00%	-2.80%

Source : tradingeconomics.com

Compiled by
Research Team
+62 21 2555 6138 Ext. 8304
research@phintracosekuritas.com

Commodities- as of 06-12-2024

	Last	% Weekly
Oil Crude	67.20	-2.08%
Oil Brent	71.12	-1.74%
Nat, Gas	3.08	-7.78%
Gold	2,633.30	-0.92%
Silver	30.95	1.11%
Coal	132.60	-4.91%
Tins	29,151.00	3.40%
Nickel	16,013.00	0.02%
CPO KLCE	5,132.00	2.17%

Source : Bloomberg, CNBC

Currencies - as of 06-12-2024

	Last	% Weekly
USD/IDR	15,865.00	0.16%
USD/JPY	1.06	0.00%
EUR/USD	149.98	0.11%

Source : Bloomberg, CNBC

Global Upcoming Released

	Date
European Council	2024
OPEC	2024
G-20	2024
G-7	2024
IMF	2024

Source : investing.com | profit.com

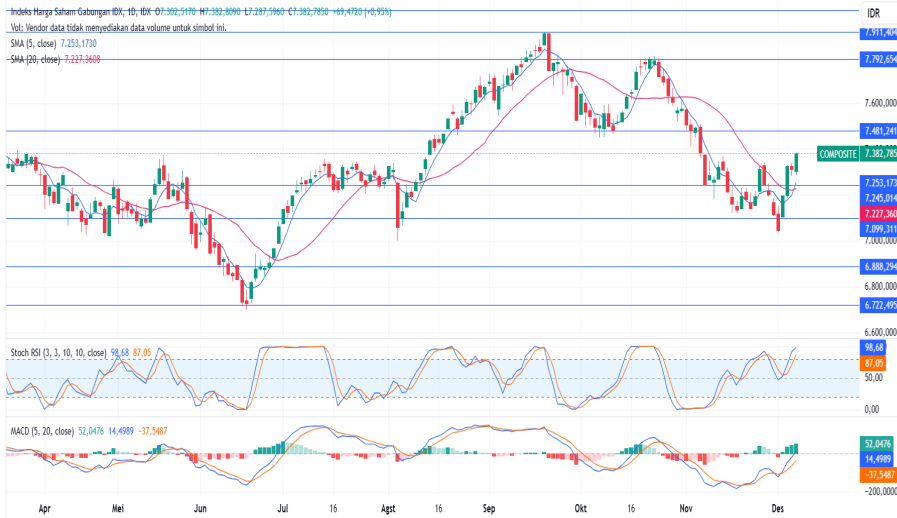
Central Bank Upcoming

	Date
BOC Canada	11-Dec-24
BOE England	19-Dec-24
BOJ Japan	19-Dec-24
ECB Europe	12-Dec-24
FED U.S.	18-Dec-24
RBA Australia	10-Dec-24
RBNZ New Zealand	2025
SNB Swiss	12-Dec-24

Source : dailyfx.com | investing.com | profit.com

JAKARTA COMPOSITE INDEX - Daily Chart

KTPS2023H dipublikasikan pada TradingView.com, Des 08, 2024 16:19 UTC+7



TV TradingView

WEEKLY MARKET REVIEW

IHSG [Resistance : 7480] [Pivot : 7400] [Support : 7330]

Indeks berbasis luas di *Wall Street*, S&P 500 (+0.25%) kembali catat rekor penutupan tertinggi baru di Jumat (6/12) dan catat *rally* penguatan mingguan ketiga. Secara umum, indeks-indeks *Wall Street* ditopang oleh keyakinan pasar terhadap peluang pemangkasan sukubunga acuan the Fed di Desember 2024. *CME FedWatch Tools* catat peluang pemangkasan 25 bps di Desember 2024 mencapai 86% (6/12). Peningkatan signifikan *U.S. Non-Farm Payrolls* ke 227 ribu di November 2024 dari 36 ribu di Oktober 2024 (6/12) tidak merubah keyakinan pemangkasan *the Fed Rate* di Desember 2024.

Semakin dekat dengan *FOMC* pada 18 Desember 2024, IHSG mulai berbalik memasuki fase *bullish reversal*. Hal ini divalidasi dengan konfirmasi *rebound* IHSG ke atas 7330-7350 di Jumat (6/12). Secara teknikal, MACD semakin solid membentuk *positive slope*, meski *pullback* wajar mungkin akan terjadi beberapa kali dalam *bullish reversal* ini, mengingat *Stochastic RSI* telah memasuki *overbought area*.

Dari dalam negeri, pasar mengantisipasi data indeks keyakinan konsumen dan penjualan ritel. Keduanya akan mempengaruhi keyakinan pasar terhadap peluang perbaikan pertumbuhan ekonomi kembali ke atas 5% di 4Q24. Sebagai informasi, penjualan ritel tumbuh 4.8% yoy di September 2024. Sementara pekan depan, *mover* pertumbuhan ekonomi lain, yaitu data ekspor-impor akan dirilis dan diyakini masih melanjutkan tren positif sejalan dengan pemulihan ekonomi Tiongkok.

Top picks meliputi JPFA, EXCL, AKRA, BBTN, MEDC, ERAA, dan TOWR.

POINTS OF INTEREST

- Indeks-indeks *Wall Street* ditopang oleh keyakinan pasar terhadap peluang pemangkasan sukubunga acuan the Fed di Desember 2024.
- CME FedWatch Tools* catat peluang pemangkasan 25 bps di Desember 2024 mencapai 86% (6/12).
- IHSG mulai berbalik memasuki fase *bullish reversal*.
- Pullback* wajar mungkin akan terjadi beberapa kali dalam *bullish reversal* ini, mengingat *Stochastic RSI* telah memasuki *overbought area*.
- Pasar mengantisipasi data indeks keyakinan konsumen dan penjualan ritel.
- Keduanya akan mempengaruhi keyakinan pasar terhadap peluang perbaikan pertumbuhan ekonomi kembali ke atas 5% di 4Q24.
- IHSG berpotensi lanjutkan penguatan uji level psikologis 7400 sampai dengan 7450-7480 di pekan ini.
- Top picks* : JPFA, EXCL, AKRA, BBTN, MEDC, ERAA, dan TOWR.

JCI Statistics as of 06-12-2024

7382.785 +0.95%
+69.472

%Weekly	3.77%
%Monthly	1.92%
%YTD	1.51%

T. Vol (Shares)	15.95 B
T. Val (Rp)	9.60 T
F. Net (Rp)	-170.35 B
2024 F. Net (Rp)	22.63 T
Market Cap (Rp)	12,673 T

2024 Lo/Hi	6,726.92 / 7,905.39
Resistance	7480
Pivot Point	7400
Support	7330

Source : IDX | Research Team

Sectoral Indices as of 06-12-2024

	Value	% Weekly
Energy	2,686.53	4.54%
B, Materials	1,349.92	3.58%
Industrials	1,078.96	0.91%
Cons, Non-Cyclicals	738.20	1.91%
Cons, Cyclicals	837.27	-0.98%
Healthcare	1,462.18	-0.93%
Financials	1,462.82	0.47%
Prop, & Real Estate	791.08	3.29%
Technology	4,274.70	4.13%
Infrastructures	1,482.35	4.30%
Trans, & Logistic	1,379.59	-1.34%

Source : BEI

Domestic Macroeconomics

	Value
GDP (Q3-2024) (YoY)	4.95%
Export Growth (YoY) - Oct'24	10.25%
Import Growth (YoY) - Oct'24	17.49%
BI Rate - Nov'24	6.00%
Inflation Rate - Nov'24 (MoM)	0.30%
Inflation Rate - Nov'24 (YoY)	1.55%
LPS - Bank Umum (Rp)	4.25%
LPS - BPR	6.75%

Source : BI | BPS | IDX

Domestic Upcoming Released

	Date
GDP	05-Feb-25
Export Import	16-Dec-24
Inflation	02-Jan-25
Interest Rate	18-Dec-24
Foreign Reserved	08-Jan-25
Trade Balance	16-Dec-24

Source : BI | BPS

MARKET NEWS

DSNG PT Dharma Satya Nusantara Tbk

PT Dharma Satya Nusantara Tbk (DSNG) melepas aset di Kalimantan Timur kepada anak usahanya pada 4 Desember 2024 dengan nilai total Rp774.6 miliar. Aset yang dijual meliputi tanah beserta pabrik pengolahan kelapa sawit senilai Rp209.91 miliar, pabrik kelapa sawit senilai Rp200.57 miliar, serta mesin senilai Rp364.08 miliar. Menurut *Corporate Secretary* DSNG, Paulina Suryanti pembeli aset ini adalah anak perusahaan DSNG, yaitu PT Swakarsa Sinarsentosa, PT Dharma Agrotama, PT Dharma Intisawit, PT Dewata Sawit Nusantara, dan PT Karya Prima Agro Sejahtera, di mana DSNG memiliki kepemilikan saham langsung dan tidak langsung sebesar 99%. Transaksi ini dikategorikan sebagai transaksi afiliasi.

PGAS PT Perusahaan Gas Negara Tbk

PT Perusahaan Gas Negara Tbk (PGAS) berhasil mempertahankan peringkat BBB- dengan outlook Stabil dari Fitch Ratings, sekaligus mempertahankan *long-term* rating AA+ (idn) dengan outlook Stabil. Direktur Keuangan PGN, Fadjar Harianto Widodo menyatakan bahwa stabilitas keuangan perusahaan menjadi kunci utama keberhasilan ini. Hingga September 2024, PGN mencatat pendapatan konsolidasian sebesar US\$2,817 juta, meningkat 5% YoY dibanding periode yang sama tahun lalu (US\$2,691 juta). Pendapatan terbesar berasal dari segmen niaga dan transmisi gas sebesar 74%, sementara segmen hulu berkontribusi 9%, dan segmen lainnya menyumbang 17%.

DEWA PT Darma Henwa Tbk

Otoritas Jasa Keuangan (OJK) belum menyetujui rencana PT Darma Henwa Tbk (DEWA) untuk melakukan Penambahan Modal Tanpa Hak Memesan Efek Terlebih Dahulu (PMTHMETD) atau *private placement*. Meskipun DEWA telah merencanakan Rapat Umum Pemegang Saham Luar Biasa (RUPSLB) untuk persetujuan *private placement* pada akhir 2023. Direktur DEWA, Ahmad Hilyadi menyatakan bahwa perusahaan masih berkomunikasi dengan OJK untuk mendapatkan izin dengan target pelaksanaan pada kuartal I 2025.

DSSA PT Dian Swastatika Sentosa Tbk

PT Dian Swastatika Sentosa Tbk (DSSA) mencatatkan laba sebesar US\$243.85 juta hingga 30 September 2024, turun 34% YoY dibandingkan periode yang sama tahun lalu sebesar US\$371.79 juta. Pendapatan usaha DSSA tercatat mencapai US\$2.24 miliar, anjlok 45% YoY dibandingkan tahun lalu yang tercatat sebesar US\$4.09 miliar. Beban pokok penjualan juga turun 44.91% YoY menjadi US\$1.3 miliar dari US\$2.36 miliar pada periode yang sama tahun lalu. Laba kotor tercatat sebesar US\$942.2 juta, merosot 45% YoY dari US\$1.72 miliar di periode yang sama tahun lalu.

MBMA PT Merdeka Battery Materials Tbk

PT Merdeka Battery Materials Tbk (MBMA) berencana melakukan Penambahan Modal Tanpa Hak Memesan Efek Terlebih Dahulu (PMTHMETD) atau *private placement* setelah mendapat persetujuan dari RUPS Luar Biasa pada 6 Desember 2024. MBMA akan menerbitkan hingga 10.8 miliar saham atau setara dengan 10% dari modal disetor. *Corporate Secretary* MBMA, Deny Greviartana Wijaya mengungkapkan bahwa tujuan *private placement* ini adalah untuk memperkuat struktur permodalan dalam mendukung pengembangan usaha dan ekspansi grup di rantai nilai mineral strategis serta bahan baku baterai kendaraan listrik.

SHARES UPDATE by Phintraco Sekuritas - as of 06-12-2024

[A]	Last	% YTD	24Lo	24Hi	Consensus Target Price	ROE	PER	PER Industry	PBV	PBV Industry	Strategy	Entry	Target	Stoploss
HRUM	1,105	-17.23%	1,050	1,480	2478	6.82	10.58	8.24	0.72	2.68	Buy on Support	1090	1180-1210	1050
INCO	3,640	-15.55%	3,510	4,430	7740	2.50	37.19	12.90	0.93	2.57	Buy on Support	3600	3800-3920	3500
INDY	1,420	-1.05%	1,155	1,825		3.72	10.65	8.24	0.40	2.68	Buy on Support	1400	1570-1600	1360
MDKA	1,910	-29.26%	1,815	2,780	5453	-2.59	-113.85	12.90	2.95	2.57	Buy on Support	1880	2040-2150	1810
NCKL	830	-17.00%	800	950		23.22	8.12	12.90	1.89	2.57	Buy on Support	820	870-880	795
PTBA	2,730	11.89%	2,380	3,160	4201	21.32	7.30	8.24	1.56	2.68	Buy on Support	2700	2830-2870	2650

[B]	Last	% YTD	24Lo	24Hi	Consensus Target Price	ROE	PER	PER Industry	PBV	PBV Industry	Strategy	Entry	Target	Stoploss
ACES	770	6.94%	705	950		12.47	17.22	15.54	2.15	1.70	Buy on Support	755	800-835	730
ICBP	11,825	11.82%	9,600	12,875	12342	23.54	12.69	15.99	2.99	1.74	Buy on Support	11700	12450-12650	11400
MIDI	414	-3.72%	374	482		15.36	22.24	15.99	3.42	1.74	Buy on Support	408	438-444	394
MYOR	2,730	9.64%	2,200	3,010	3207	16.98	22.71	15.99	3.86	1.74	Buy on Support	2680	2880-2970	2590

[C]	Last	% YTD	24Lo	24Hi	Consensus Target Price	ROE	PER	PER Industry	PBV	PBV Industry	Strategy	Entry	Target	Stoploss
BBCA	10,075	7.18%	9,025	10,950	9640	21.41	22.45	18.98	4.81	1.85	Hold	9950	10400-10500	9700
BBRI	4,310	-24.72%	4,090	5,575	5680	18.58	10.76	18.98	2.00	1.85	Buy on Support	4170	4470-4600	4050
BMRI	6,225	2.89%	5,525	7,550	6546	20.59	10.27	18.98	2.11	1.85	Buy on Support	6100	6400-6600	5950
BBNI	4,860	-9.58%	4,260	5,850	11499	13.82	8.25	18.98	1.14	1.85	Buy on Support	4770	5100-5250	4650
BNGA	1,780	5.01%	1,625	2,020		13.15	6.47	18.98	0.85	1.85	Buy on Support	1750	1830-1865	1710

[D]	Last	% YTD	24Lo	24Hi	Consensus Target Price	ROE	PER	PER Industry	PBV	PBV Industry	Strategy	Entry	Target	Stoploss
BIRD	1,910	6.70%	1,450	2,210		10.15	8.22	10.83	0.83	6.17	Wait and See	1850	1960-2000	1800
SIDO	580	10.48%	520	710	969	28.52	16.77	23.27	4.78	3.05	Buy on Support	570	610-625	550
SMDR	282	-11.88%	252	378		10.70	5.53	10.83	0.59	6.17	Buy on Support	280	300-320	270

[E]	Last	% YTD	24Lo	24Hi	Consensus Target Price	ROE	PER	PER Industry	PBV	PBV Industry	Strategy	Entry	Target	Stoploss
ISAT	2,500	-3.85%	2,120	2,600	8650	15.93	15.59	11.92	2.48	3.11	Sell on Strength	-	2560-2600	-
JSMR	4,580	-5.95%	4,360	5,500	4746	13.32	7.55	11.92	1.01	3.11	Trading Buy	4530	4780-4860	4400
TLKM	2,760	-30.13%	2,500	3,190	4945	17.37	11.60	11.92	2.01	3.11	Sell on Strength	-	2800-2830	-

[F]	Last	% YTD	24Lo	24Hi	Consensus Target Price	ROE	PER	PER Industry	PBV	PBV Industry	Strategy	Entry	Target	Stoploss
BSDE	1,000	-7.41%	870	1,340	1217	9.19	5.88	9.70	0.54	1.33	Buy on Support	980	1060-1100	940
CTRA	1,085	-7.26%	1,010	1,430	1319	8.17	11.81	9.70	0.96	1.33	Buy on Support	1065	1160-1200	1020
PWON	426	-6.17%	366	530	581	10.91	9.26	9.70	1.01	1.33	Buy on Support	418	452-462	402
SMRA	540	-6.09%	480	730	839	11.71	7.16	9.70	0.84	1.33	Buy on Support	535	575-600	515

[G]	Last	% YTD	24Lo	24Hi	Consensus Target Price	ROE	PER	PER Industry	PBV	PBV Industry	Strategy	Entry	Target	Stoploss
ASII	5,150	-8.85%	4,290	5,300	7380	16.66	6.05	8.20	1.01	0.87	Buy on Support	5050	5300-5375	4900
UNTR	27,950	23.54%	21,100	28,150	34175	24.27	5.02	8.20	1.22	0.87	Sell on Strength	-	28000-28200	-

Source : IDX | AT Research | A : Basic Materials & Energy | B : Consumer Cyclical & Non-Cyclical | C : Financials | D : Healthcare, Technology, Transportation & Logistic | E : Infrastructures |

F : Property & Real Estate | G : Industrials

CA Reminder

Cash Dividend	Dividend	Cum Date	Ex Date	Payment Date
BBCA	Rp50	20-Nov-24	21-Nov-24	11-Dec-24
BFIN	28	11-Dec-24	12-Dec-24	19-Dec-24
BREN	4	11-Dec-24	12-Dec-24	20-Dec-24
DUTI	380	12-Dec-24	13-Dec-24	23-Dec-24
EAST	4	12-Dec-24	13-Dec-24	27-Dec-24
GDST	8	13-Dec-24	16-Dec-24	30-Dec-24
GEMS	US\$0	6-Dec-24	9-Dec-24	17-Dec-24
JTPE	Rp7	21-Nov-24	22-Nov-24	11-Dec-24
MLBI	Rp190	22-Nov-24	25-Nov-24	12-Dec-24
NELY	15	10-Dec-24	11-Dec-24	27-Dec-24
PNGO	Rp40	28-Nov-24	29-Nov-24	13-Dec-24
POWR	Rp28	6-Dec-24	9-Dec-24	18-Dec-24
SPTO	Rp35	21-Nov-24	22-Nov-24	10-Dec-24
TOTO	Rp12	21-Nov-24	22-Nov-24	12-Dec-24
RUPST				Date
ARTI				12-Dec-24
RUPSLB				Date
ADCP				10-Dec-24
BJTM				11-Dec-24
CENT				10-Dec-24
DGNS				11-Dec-24
HITS				12-Dec-24
INAF				12-Dec-24
JATI				10-Dec-24
MDLN				12-Dec-24
TLDN				13-Dec-24

Source : ksei

PHINTRACO SEKURITAS

Kantor Cabang & Mitra GI BEI



DISCLAIMER : The information on this document is provided for information purpose only, It does not constitute any offer, recommendation or solicitation to any person to enter into any transaction or adopt any trading or investment strategy, nor does it constitute any prediction of likely future movement in prices, Users of this document should seek advice regarding the appropriateness of investing in any securities, financial instruments or investment strategies referred to on this document and should understand that statements regarding future prospects may not be realized, Opinion, Projections and estimates are subject to change without notice, Phintraco Sekuritas is not an investment adviser, and is not purporting to provide you with investment advice, Phintraco Sekuritas accepts no liability whatsoever for any direct or consequential loss arising from the use of this report or its contents, This report may not be reproduced, distributed or published by any recipient for any purpose.